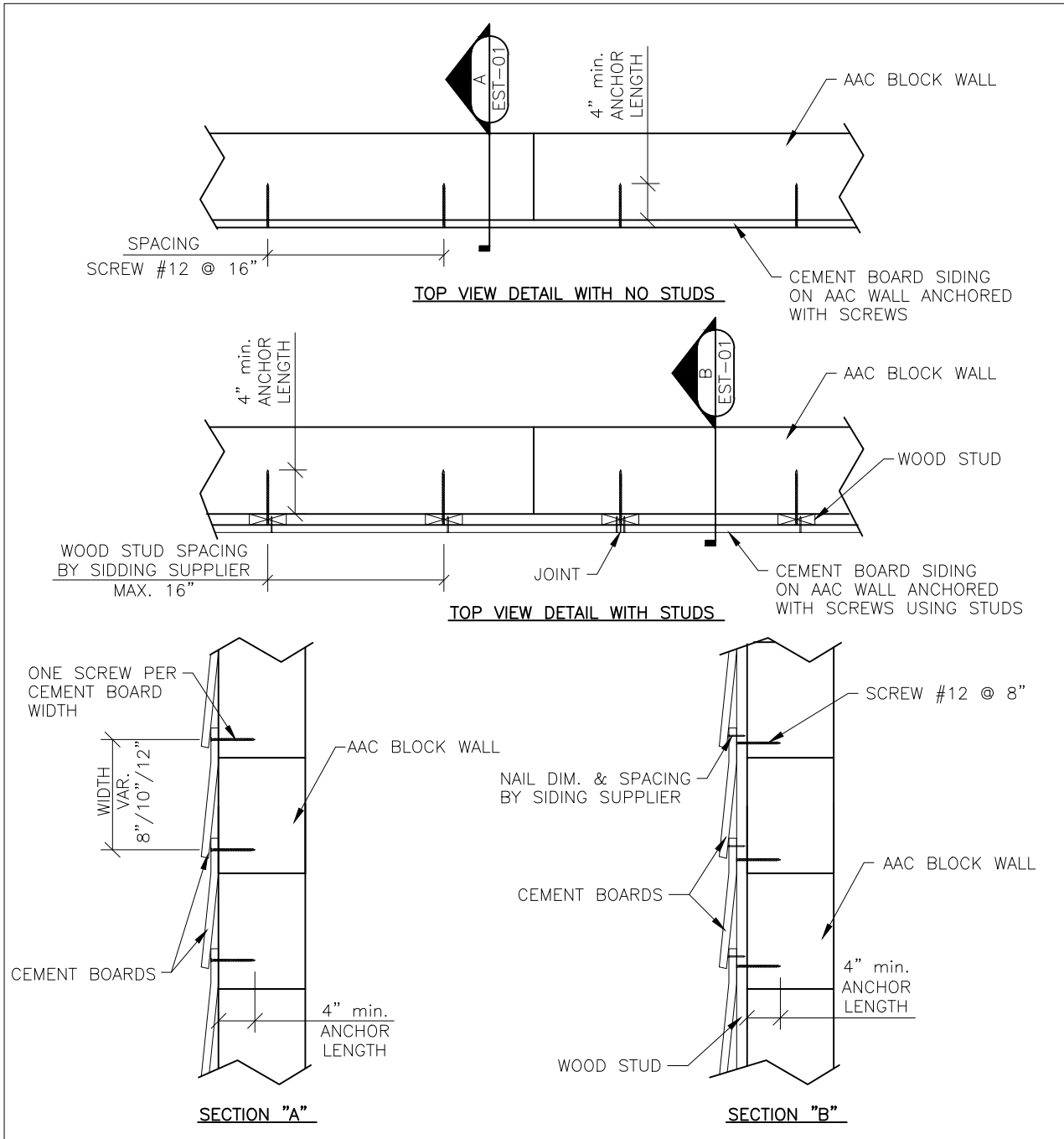


Cement Board as siding on AAC Wall



NOTES

- 1.-NOT SCALE
- 2.-DIMENSIONS INCHES
- 3.-SEE CEMENT BOARD TECHNICAL SHEET PROVIDED BY SUPPLIER (DIMENSIONS)
- 4.- USE SCREW TYPE DESKFAST #12 AND MINIMUM ANCHOR LENGTH 4"

- 5.- MAXIMUM PULL OUT PER #12 SCREW IS 60 lb (AAC6) AND 35 lb (AAC4).